

# Parkheath

*Sold on Service*

---

**Eton College Road NW3**  
**Asking Price £710,000**



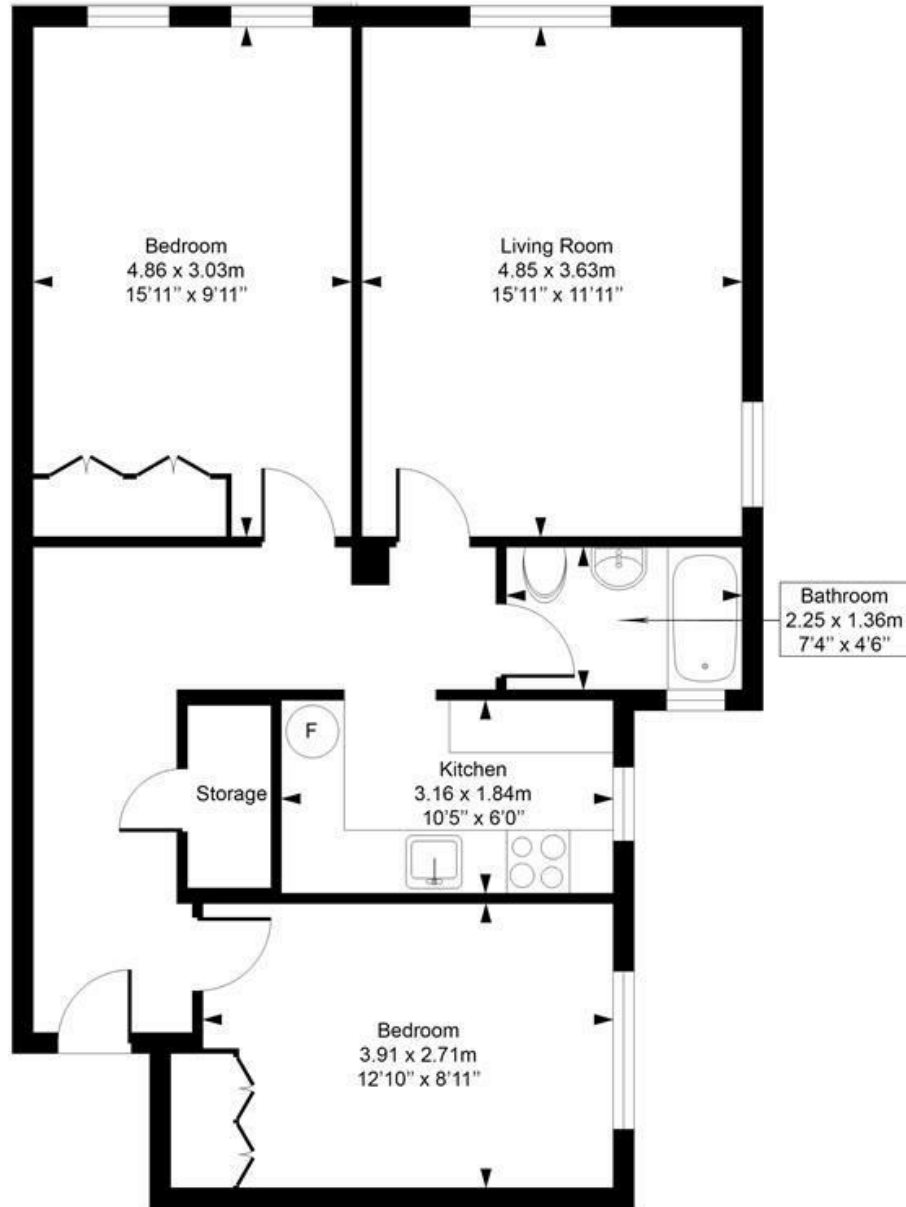
Immaculately presented apartment  
2 Double bedrooms with wardrobes  
Sleek, contemporary design  
Neutral decor with engineered wood floors  
Lift, portorage and communal garden

Naturally bright with great views  
Set in popular 1930's block  
Spacious 16ft reception  
215 years from 1982  
Ideal for Chalk Farm, Primrose Hill and Belsize Park

Belsize Park Office 020 7431 3104

# Eton Place

Approximate Gross Internal Area = 67.1 Sq m / 722 sq ft



## Fourth Floor

This plan is for layout guidance only. Drawn in accordance with RICS guidelines. Not drawn to scale unless stated. Windows & door openings are approximate. Whilst every care is taken in the preparation of this plan, please check all dimensions, shapes & compass bearings before marking any decisions reliant upon them.

ELLIE CLAIRE PHOTOGRAPHY LTD  
[www.ellieclairephotography.com](http://www.ellieclairephotography.com)

The particulars do not constitute part of an offer or contract. The particulars, including text, photographs and plans, are for the guidance only of prospective purchasers/tenants and must not be relied upon as statements of fact. The descriptions provided therein represent the opinion of the author and whilst given in good faith should not be construed as statements of fact. Nothing in these particulars shall be deemed a statement that the property is in good condition or otherwise or that any services or facilities are in good working order. All measurements are approximate